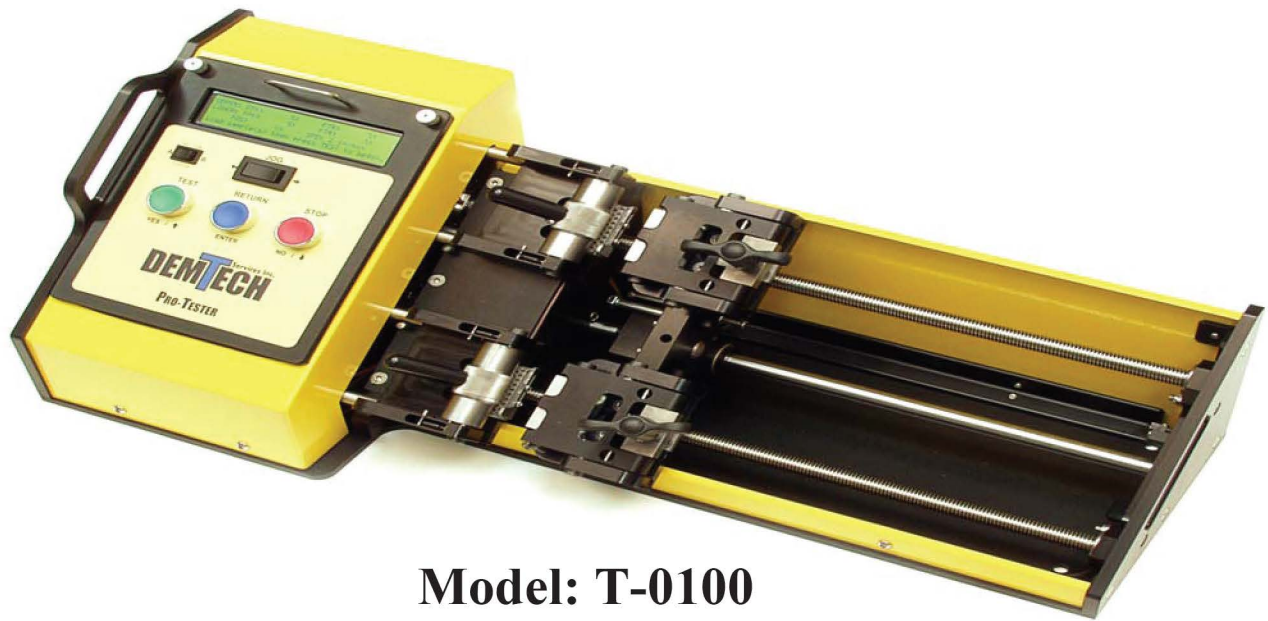




## Pro-Tester<sup>TM</sup>



**Model: T-0100  
Field Tensiometer**

## Operator's Manual

### Scope of Manual:

This manual contains procedures for general unpacking, installation, setup and operation of your DEMTECH Services, Inc. tensiometer.

**Revision: B**

8

7

6

5

4

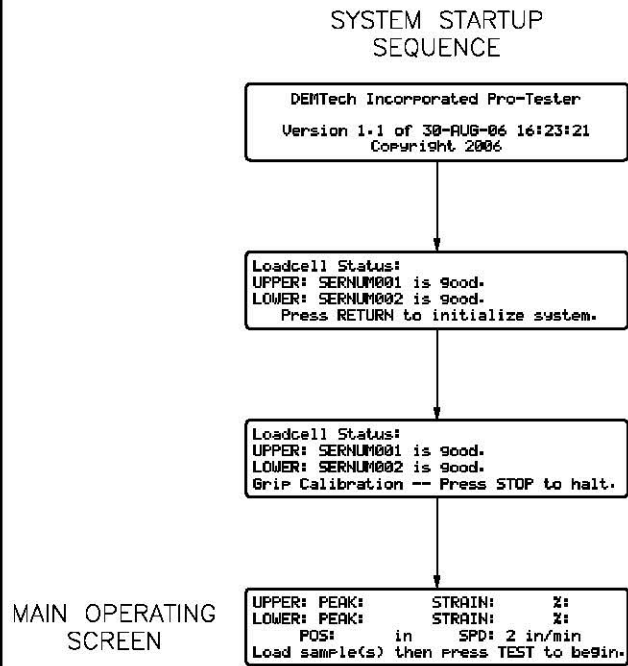
3

2

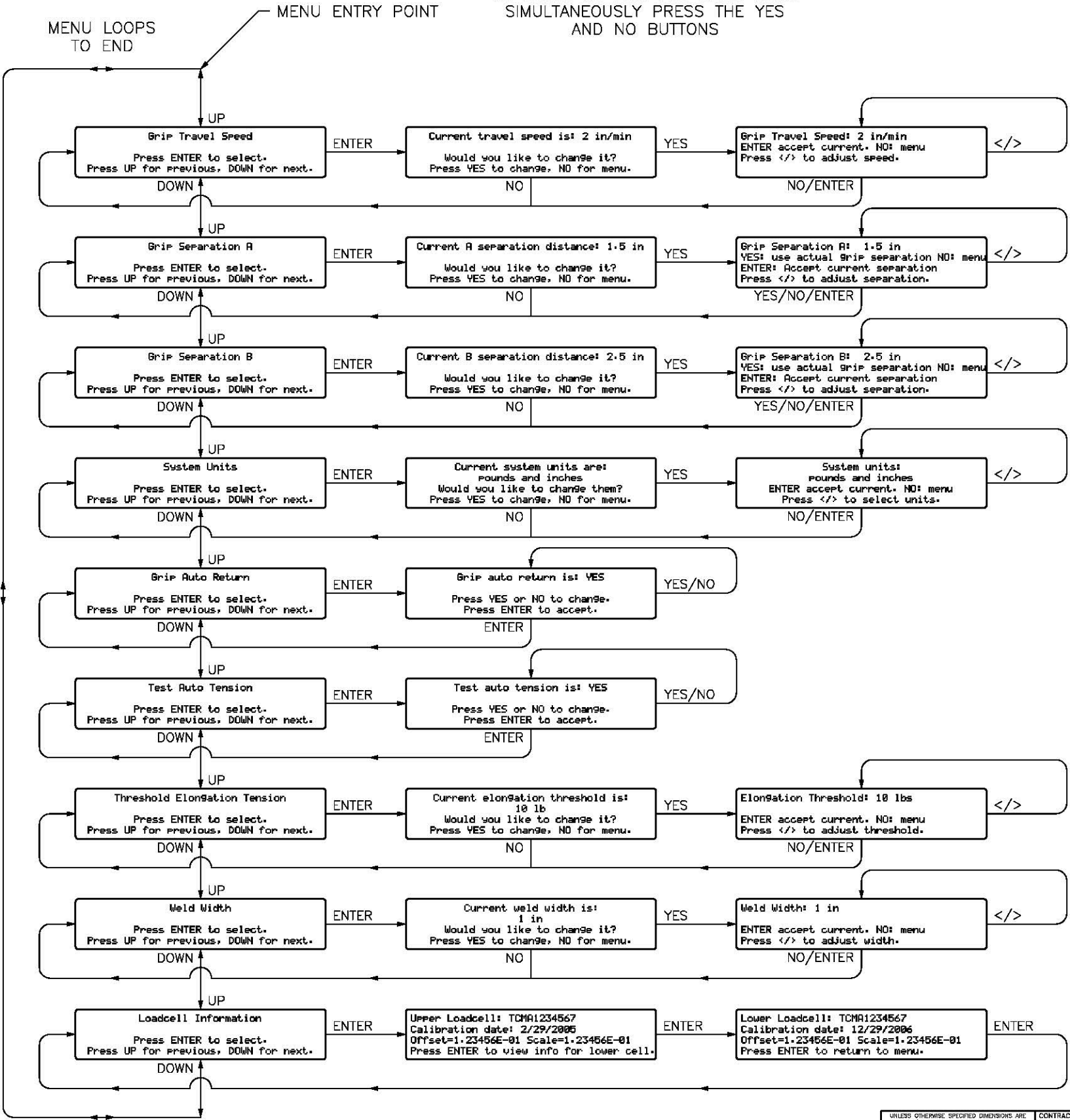
1

PROPRIETARY DATA NOTICE  
This document, prepared exclusively for DEMTECH Services Inc., is the property of DEMTECH Services Inc. and as such shall be surrendered to same upon request. This document contains confidential and proprietary information and the data disclosed herein or herewith is not to be reproduced, used, or disclosed in whole or in part to any third person or entity in any manner without prior written permission from DEMTECH Services Inc.

DWG. NO. T-000, APPENDIX B		SHEET 1	REV. B	1	
REVISION HISTORY					
ZONE	REV.	DESCRIPTION		DATE	APPROVED
ALL	A	OPERATOR'S MANUAL, APPENDIX B		06/08/05	ISD
ALL	B	REVISE MENU TREE		01/22/07	ISD



MAIN OPERATING SCREEN

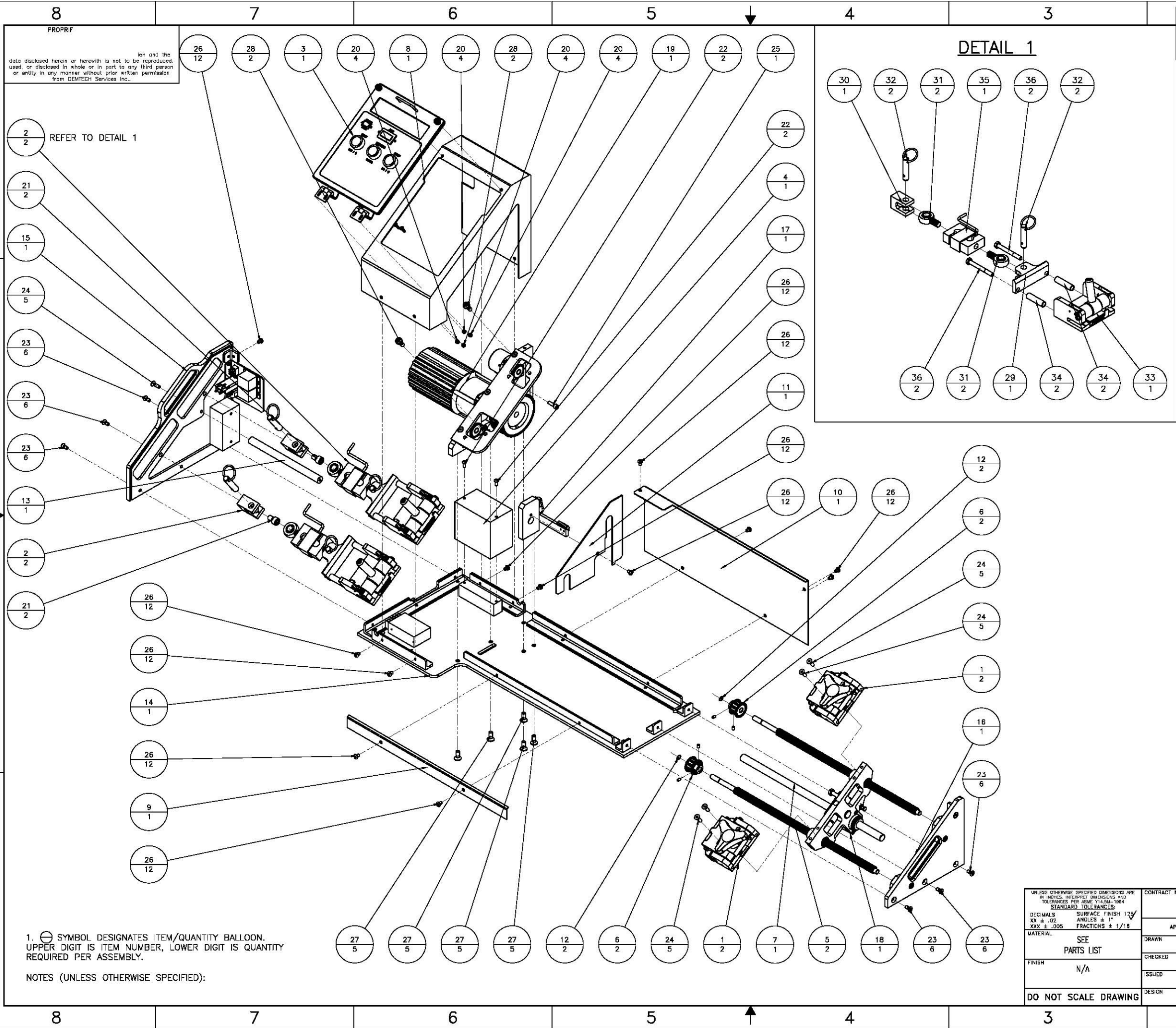


2. TO ENTER THE MENU MODE MAKE SURE THE PRO-TESTER IS ON AND AT THE MAIN OPERATING SCREEN. SIMULTANEOUSLY PRESS THE YES AND NO BUTTONS.

1. THIS DRAWING DEPICTS THE MENU SCREEN STRUCTURE FOR THE DEMTECH PRO-TESTER PRODUCT. USE THIS DRAWING TO LOCATE A PARTICULAR FUNCTION OR SETTING YOU WISH TO ACCESS. ONCE LOCATED FOLLOW THE TREE BACK TO THE TOP LEVEL. NEXT, UTILIZING THE USER INTERFACE ON THE PRO-TESTER, PROCEED BACK DOWN THROUGH THE MENU STRUCTURE USING THIS DRAWING AS A GUIDE TO ACCESS THE PARTICULAR SCREEN YOU WANT.

NOTES (UNLESS OTHERWISE SPECIFIED):

UNLESS OTHERWISE SPECIFIED DIMENSIONS ARE IN INCHES. INTERPRET DIMENSIONS AND TOLERANCES PER ASME Y14.5M-1994 STANDARD TOLERANCES:		CONTRACT NO. N/A		DEMTech Services Inc. Placerville, California	
DECIMALS XX ± .02	SURFACE FINISH 125	APPROVALS	DATE	TITLE MENU TREE, DEMTECH PRO-TESTER	
XXX ± .005	ANGLES ± 1°	DRAWN	06/08/05		
	FRACTIONS ± 1/16	CHECKED			
		ISSUED			
MATERIAL N/A		DESIGN	06/08/05	SIZE D	CASE CODE N/A
FINISH N/A				DWG. NO. T-000, APPENDIX B	REV. B
DO NOT SCALE DRAWING				SCALE 1:1	SHEET 1 OF 1



DWG. NO.		SHEET		REV.		1	
T-000, APPENDIX C		1		B			
REVISION HISTORY							
ZONE	REV.	DESCRIPTION				DATE	APPROVED
ALL	A	OPERATOR'S MANUAL, APPENDIX C				12/28/06	ISD
ALL	B	ADD T-027, GRIP TO STRAIN GAGE ASSEMBLY DETAIL				01/22/07	ISD

36	STOCK	BOLT, M8 X 1.25 X 70mm LONG, HEX HEAD CAP, SS
35	T-096A	LOAD CELL, TENSION/COMPRESSION, 500 LB
34	T-065	STANDOFF, STRAIN GAUGE BRACKET
33	T-035	SAMPLE GRIP ASSEMBLY, CAM STYLE
32	T-026	PIN, QUICK RELEASE, 1/2" DIA X 1.3" GRIP LENGTH, ZINC PLATED STEEL
31	T-025	ROD END, STRAIN GAGE, MODIFIED
30	T-024	BRACKET, STRAIN GAGE, MOUNT
29	T-023	BRACKET, STRAIN GAGE, GRIP ASSY
28	STOCK	SCREW, SHOULDER, 3/8" OD X 1/4" LONG, SS
27	STOCK	SCREW, M8 X 1.25 X 20mm LONG, FLAT HEAD CAP, SS
26	STOCK	SCREW, M6 X 1 X 8mm LONG, BOTTON HEAD CAP, SS
25	STOCK	SCREW, M6 X 1 X 20mm LONG, SOCKET HEAD CAP, SS
24	STOCK	SCREW, M6 X 1 X 20mm LONG, FLAT HEAD CAP, SS
23	STOCK	SCREW, M6 X 1 X 14mm LONG, FLAT HEAD CAP, SS
22	STOCK	SCREW, M5 X .8 X 12mm LONG, BOTTON HEAD CAP, SS
21	STOCK	SCREW, M10 X 1.5 X 16mm LONG, SOCKET HEAD CAP, SS
20	STOCK	NUT, M4 X .7 HEX, NYLON INSERT LOCKING, ZINC PLATED STEEL
19	T-109	MOTOR SUPPORT PLATE ASSEMBLY
18	T-107	SHAFT CARRIAGE PLATE ASSEMBLY
17	T-106	GUIDE SHAFT SUPPORT ASSEMBLY
16	T-105	RIGHT SIDE PLATE ASSEMBLY
15	T-103	LEFT SIDE PLATE ASSEMBLY
14	T-101	MAIN BASE PLATE ASSEMBLY
13	T-100	SHAFT, STIFFENER
12	T-097	SNAP RING, 10mm EXTERNAL, HEAVY DUTY
11	T-088	COVER, BELT DRIVE, INSIDE
10	T-087	COVER, REAR
9	T-086	COVER, FRONT
8	T-072	HOUSING, MAIN CONTROL PANEL
7	T-066	SHAFT, GUIDE, LINEAR BEARING
6	T-059	PULLEY, 10 TOOTH X 3/8" PITCH, 10mm BORE, ALUMINUM W/ FLANGES
5	T-057	SCREW, 5/8" X .20" LEAD, GRIP DRIVE
4	T-056	CONTROLLER, 1/2 HP, INVERTER DUTY
3	T-028	MAIN CONTROL PANEL ASSEMBLY
2	T-027	GRIP TO STRAIN GAGE ASSY
1	T-022	SAMPLE GRIP ASSEMBLY, TENSIO METER

Item	Part Number	Title/Description
Parts List		

UNLESS OTHERWISE SPECIFIED DIMENSIONS ARE IN INCHES. INTERPRET DIMENSIONS AND TOLERANCES PER ASME Y14.5M-1994. STANDARD TOLERANCES:		CONTRACT NO.		APPROVALS		DATE		TITLE	
DECIMALS XX ± .02	SURFACE FINISH 125	N/A		DRAWN ISD	CHECKED	ISSUED	DESIGN	SIZE D	CAGE CODE N/A
FRACTIONS XXX ± .005	ANGLES ± 1°								
MATERIAL SEE PARTS LIST	FINISH N/A	DO NOT SCALE DRAWING		ISD	12/28/06	SCALE 1:4	DWG. NO. T-000, APPENDIX C	REV. B	SHEET 1 OF 1

DEMTECH Services Inc. Placerville, California

PRO-TESTER TENSIO METER PARTS ID

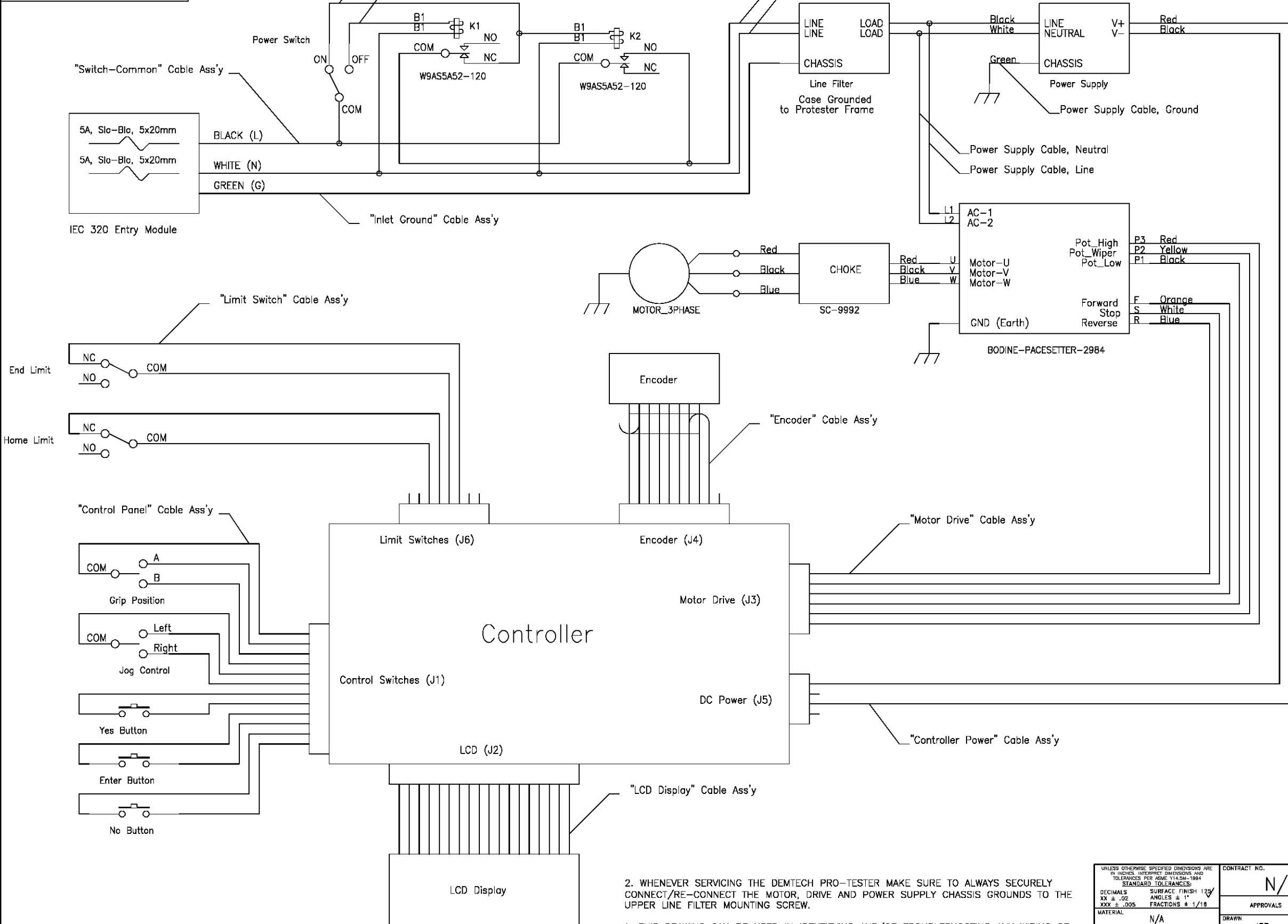
2

1

8 7 6 5 4 3 2 1

**PROPRIETARY DATA NOTICE**  
This document, prepared exclusively for DEMTECH Services Inc., is the property of DEMTECH Services Inc. and as such shall be surrendered to same upon request. This document contains confidential and proprietary information and the data disclosed herein or herewith is not to be reproduced, used, or disclosed in whole or in part to any third person or entity in any manner without prior written permission from DEMTECH Services Inc.

DWG. NO.		SH.	REV.	1	
T-000, APPENDIX D		1	A		
REVISION HISTORY					
ZONE	REV.	DESCRIPTION		DATE	APPROVED
ALL	A	OPERATOR'S MANUAL, APPENDIX D		06/08/05	ISD



2. WHENEVER SERVICING THE DEMTECH PRO-TESTER MAKE SURE TO ALWAYS SECURELY CONNECT/RE-CONNECT THE MOTOR, DRIVE AND POWER SUPPLY CHASSIS GROUNDS TO THE UPPER LINE FILTER MOUNTING SCREW.

1. THIS DRAWING CAN BE USED IN IDENTIFYING AND/OR TROUBLESHOOTING ANY WIRING OR INTERCONNECTION ISSUES RELATED TO THE DEMTECH PRO-TESTER PRODUCT.

NOTES (UNLESS OTHERWISE SPECIFIED):

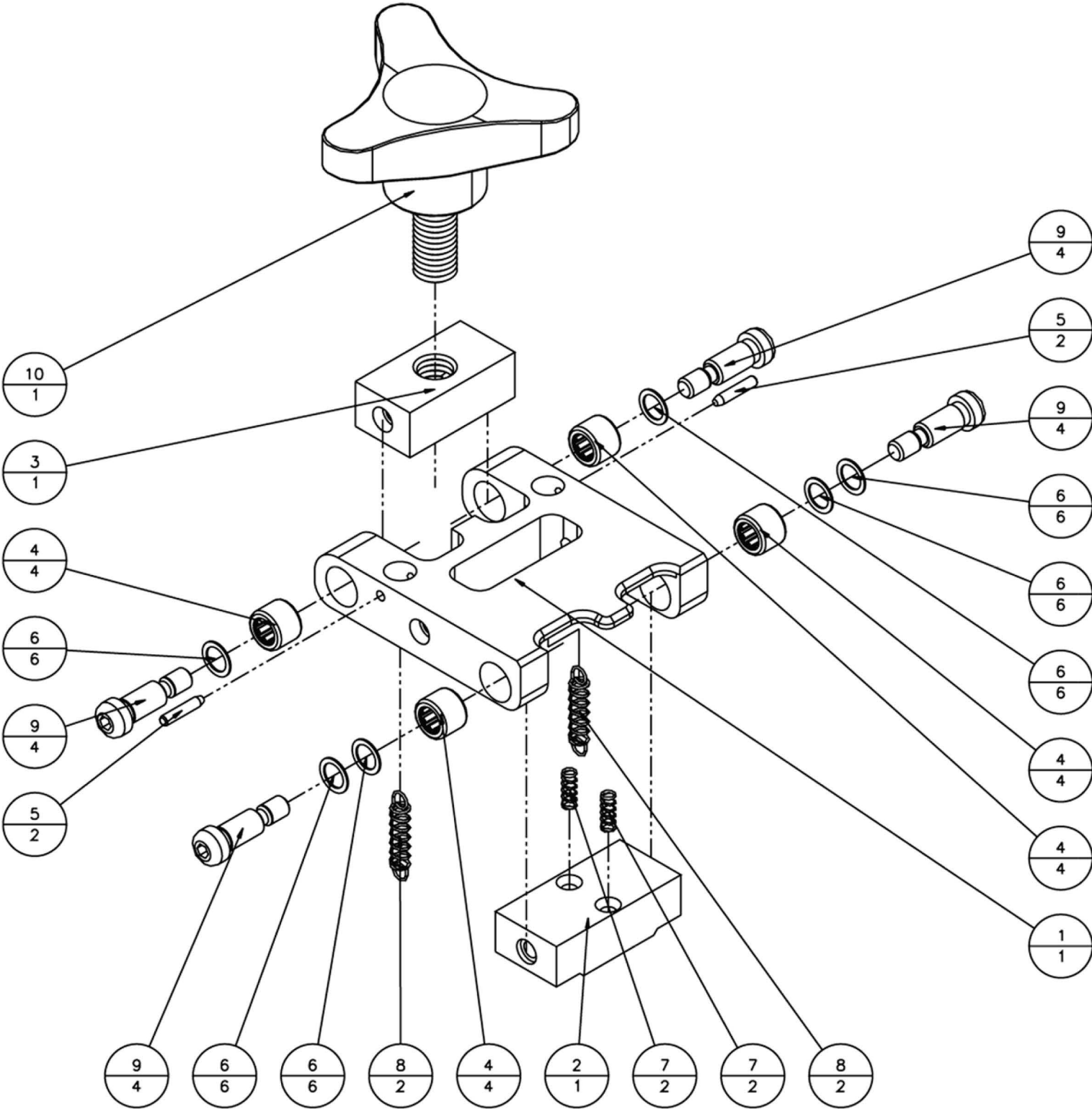
UNLESS OTHERWISE SPECIFIED DIMENSIONS ARE IN INCHES. INTERPRET DIMENSIONS AND TOLERANCES PER ASME Y14.5M-1994. STANDARD TOLERANCES:		CONTRACT NO.		N/A		DEMTECH Services Inc. Placerville, California	
DECIMALS XX ± .02 XXX ± .005	SURFACE FINISH 125/✓ ANGLES ± 1° FRACTIONS ± 1/16	APPROVALS	DATE	TITLE		SYSTEM SCHEMATIC, DEMTECH PRO-TESTER	
MATERIAL	N/A	DRAWN	ISD	06/08/05		SIZE	
FINISH	N/A	CHECKED				D N/A	
DO NOT SCALE DRAWING		ISSUED				DWG. NO.	
		DESIGN	ISD	06/08/05		T-000, APPENDIX D	
				SCALE		1:1	
				SHEET		1 OF 1	

8 7 6 5 4 3 2 1

## **Pro-Tester Assemblies:**

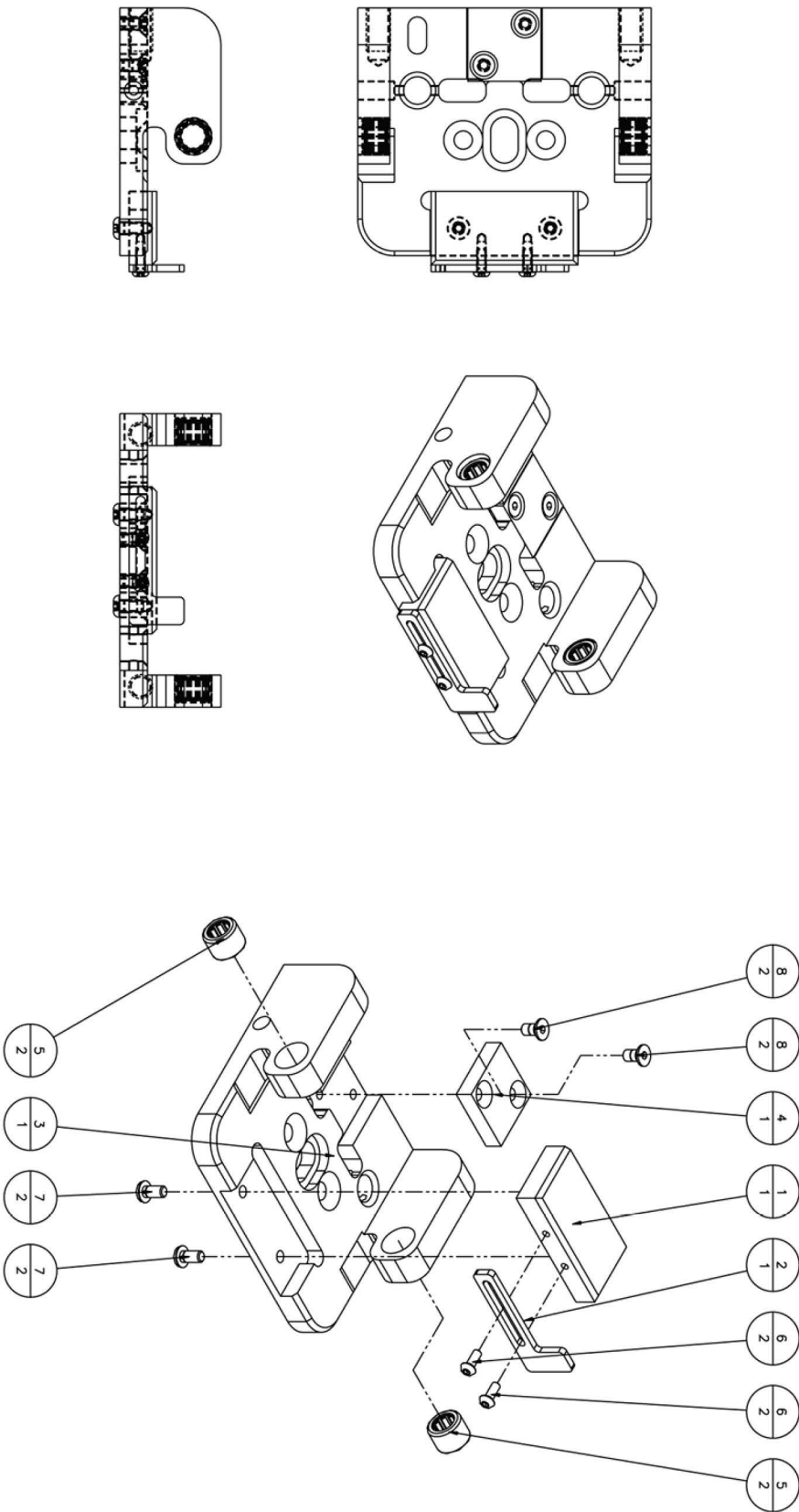
### Exploded-View Drawings and Parts Lists





10	T-019	KNOB, THREE PRONG BLACK PLASTIC, 1/2-13 X 1.18" LONG STUD	1
9	T-018	SCREW, SHOULDER, 5/16" OD X 5/8" LONG, HARDENED ALLOY STEEL	4
8	T-017	SPRING, EXTENSION, .029" WIRE DIA X .240" OD X .750" LONG, MUSIC WIRE	2
7	T-016	SPRING, COMPRESSION, .025" WIRE DIA X .180" OD X .563" LONG, MUSIC WIRE	2
6	T-015	SHIM, .314" ID X .438" OD X .020" THICK, SS	6
5	T-014	PIN, DOWEL 1/8" OD X 5/8" LONG, HARDENED, SS	2
4	T-013	BEARING, GRIP ASSY, 5/16" ID X 1/2" OD X 1/2" LONG	4
3	T-011	NUT, 1/2-13, UPPER JAW, SWIVEL	1
2	T-008B	BLOCK, GRIPPER MOUNT, UPPER	1
1	T-005	JAW, SAMPLE GRIP, UPPER	1
<b>ITEM</b>	<b>PART NUMBER</b>	<b>DESCRIPTION</b>	<b>QTY</b>
<b>Parts List</b>			

*T-020, Upper Jaw Assembly, Pro-Tester*

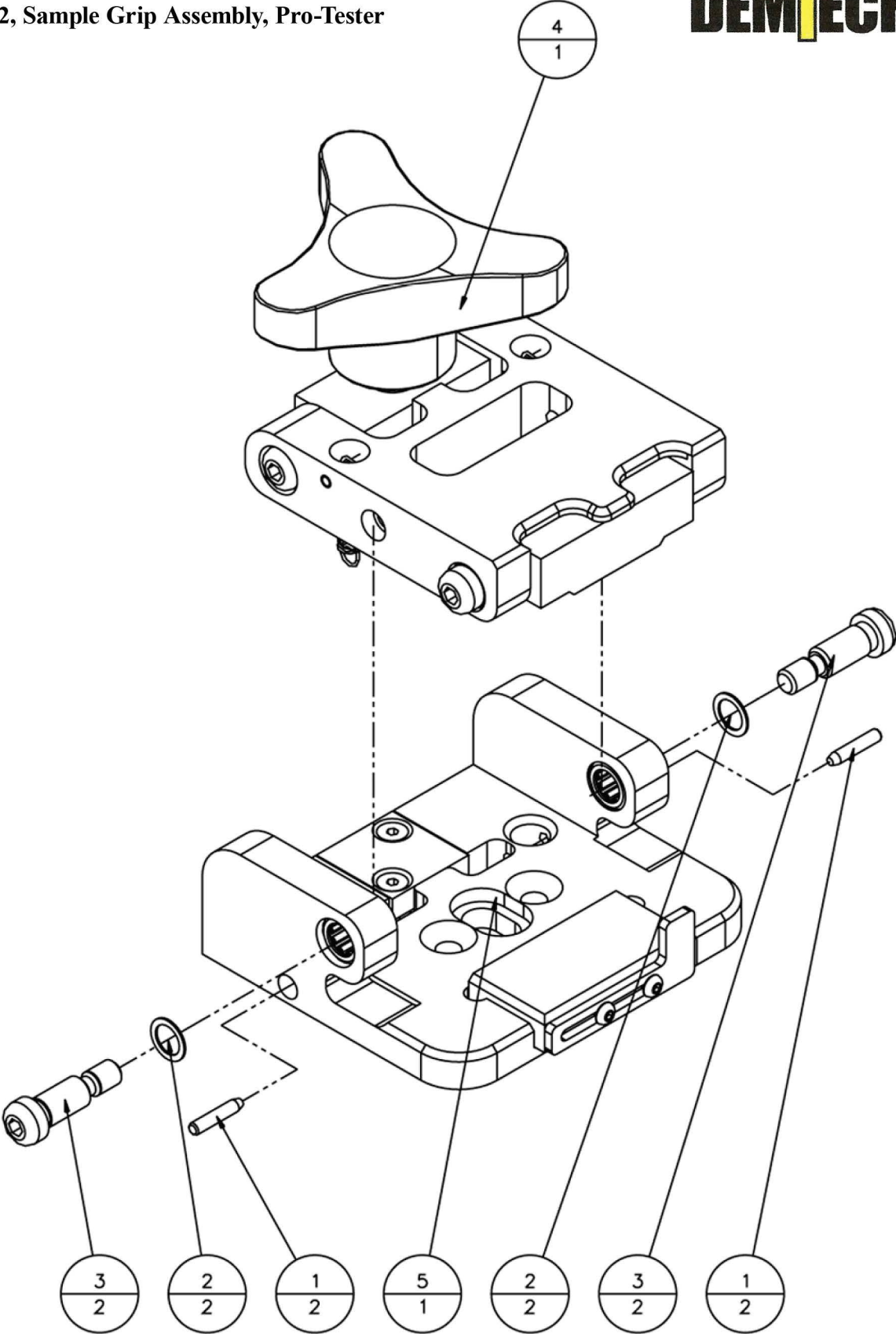






8	STOCK	SCREW, M4 X .7 X 8mm LONG, FLAT HEAD SOCKET, SS	2
7	STOCK	SCREW, M4 X .7 X 8mm LONG, BUTTON HEAD SOCKET, SS	2
6	STOCK	SCREW, M3 X .5 X 8mm LONG, BUTTON HEAD SOCKET, SS	2
5	T-013	BEARING, GRIP ASSY, 5/16" ID X 1/2" OD X 1/2" LONG	2
4	T-010	PAD, CLAMP SCREW, STRIKER	1
3	T-009	JAW, SAMPLE GRIP, LOWER	1
2	T-007	STOP, SAMPLE SIDE, ADJUSTABLE	1
1	T-006	GRIP, SAMPLE, LOWER	1
<b>ITEM</b>	<b>PART NUMBER</b>	<b>DESCRIPTION</b>	<b>QTY</b>
<b>Parts List</b>			

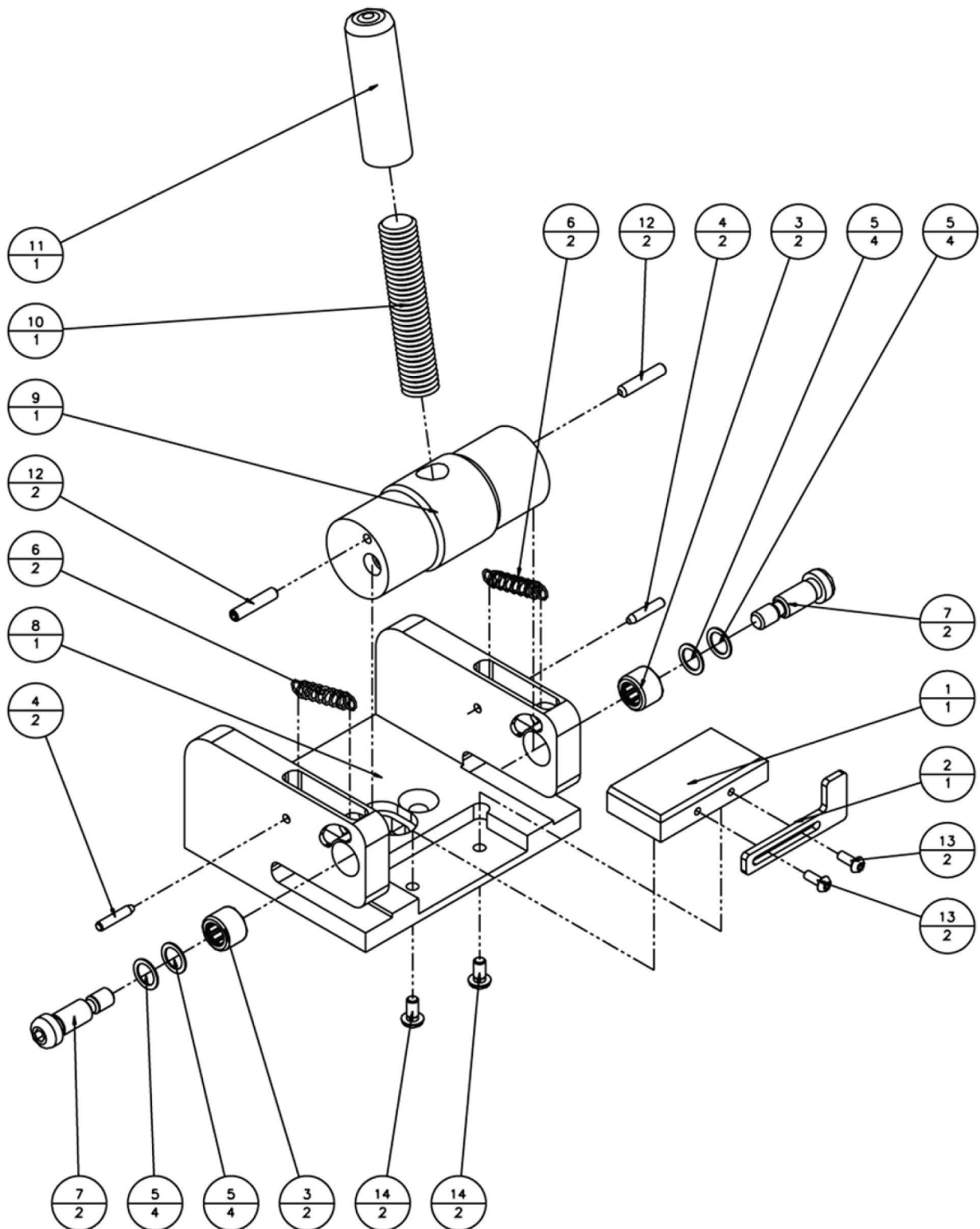
***T-021, Lower Jaw Assembly, Pro-Tester***





5	T-021	LOWER JAW ASSEMBLY, TENSIO METER	1
4	T-020	UPPER JAW ASSEMBLY, TENSIO METER	1
3	T-018	SCREW, SHOULDER, 5/16" OD X 5/8" LONG, HARDENED ALLOY STEEL	2
2	T-015	SHIM, .314" ID X .438" OD X .020" THICK, SS	2
1	T-014	PIN, DOWEL, 1/8" OD X 5/8" LONG, HARDENED, SS	2
<b>ITEM</b>	<b>PART NUMBER</b>	<b>DESCRIPTION</b>	<b>QTY</b>
<b>Parts List</b>			

***T-022, Sample Grip Assembly, Pro-Tester***



14	STOCK	SCREW, M4 X .7 X 8mm LONG, BUTTON HEAD SOCKET, SS	2
13	STOCK	SCREW, M3 X .5 X 8mm LONG, BUTTON HEAD SOCKET, SS	2
12	T-034	SCREW, SET, M4 X .7 X 20mm LONG, ALLEN CUP POINT, SS	2
11	T-033	CAP, 1/2" ID X 2" LONG, VINYL, BLACK	1
10	T-032	STUD, 1/2-13 X 2-1/2" LONG, FULLY THREADED, SS	1
9	T-031	CAM, SAMPLE GRIP, PIVOT	1
8	T-030	JAW, SAMPLE GRIP, LOWER, CAM	1
7	T-018	SCREW, SHOULDER, 5/16" OD X 5/8" LONG, HARDENED ALLOY STEEL	2
6	T-017	SPRING, EXTENSION, .029" WIRE DIA X .240" OD X .750" LONG, MUSIC WIRE	2
5	T-015	SHIM, .314" ID X .438" OD X .020" THICK, SS	4
4	T-014	PIN, DOWEL, 1/8" OD X 5/8" LONG, HARDENED, SS	2
3	T-013	BEARING, GRIP ASSY, 5/16" ID X 1/2" OD X 1/2" LONG	2
2	T-007	STOP, SAMPLE SIDE, ADJUSTABLE	1
1	T-006	GRIP, SAMPLE, LOWER	1
<b>ITEM</b>	<b>PART NUMBER</b>	<b>DESCRIPTION</b>	<b>QTY</b>
<b>Parts List</b>			

*T-035, Assembly, Cam Style Assembly, Pro-Tester*

**DEMTECH** Services Inc.

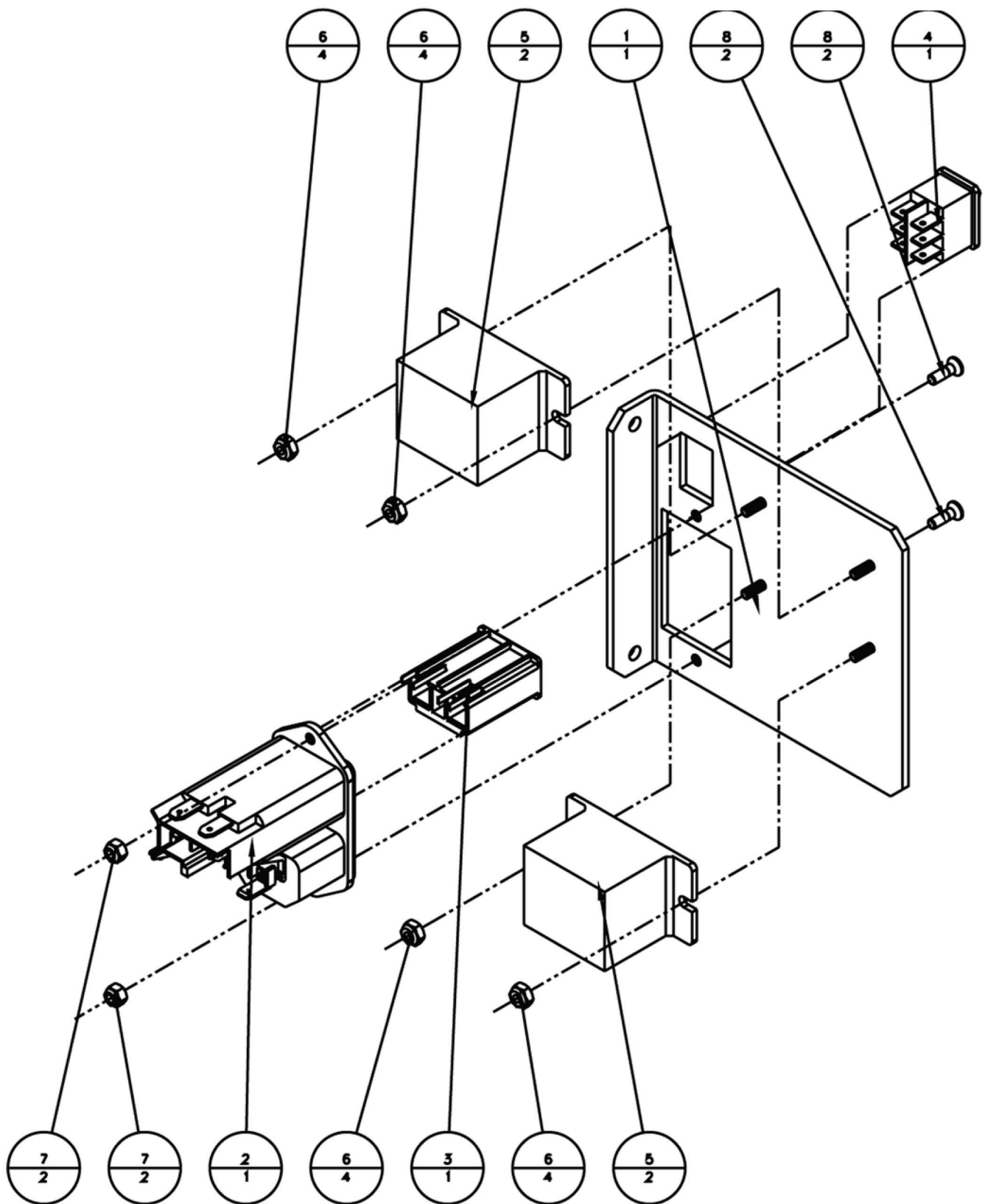




11	STOCK	SPACER, .140" ID X .375" OD X .250" LONG, NATURAL NYLON	2
10	STOCK	SCREW, M6 X 1 X 12mm LONG, FLAT HEAD CAP, SS	14
9	STOCK	SCREW, M4 X .7 X 16mm LONG, FLAT HEAD CAP, SS	2
8	STOCK	SCREW, M3 X .5 X 16mm LONG, FLAT HEAD CAP, SS	2
7	T-110	STANDOFF, MOTOR CONTROLLER	2
6	T-073	PLATE, MAIN BASE, SUPPORT	1
5	T-071	ANGLE, MOUNTING, 1" X 1" X 1" LONG	3
4	T-070	ANGLE, MOUNTING, 1" X 1" X 18" LONG	2
3	T-069	ANGLE, MOUNTING, 1" X 1" X 11-3/4" LONG	1
2	T-068	ANGLE, MOUNTING, 1" X 1" X 6-1/2" LONG	2
1	T-044	POWER SUPPLY, 5VDC @ 5A, SINGLE OUTPUT	1
<b>ITEM</b>	<b>PART NUMBER</b>	<b>DESCRIPTION</b>	<b>QTY</b>
<b>Parts List</b>			

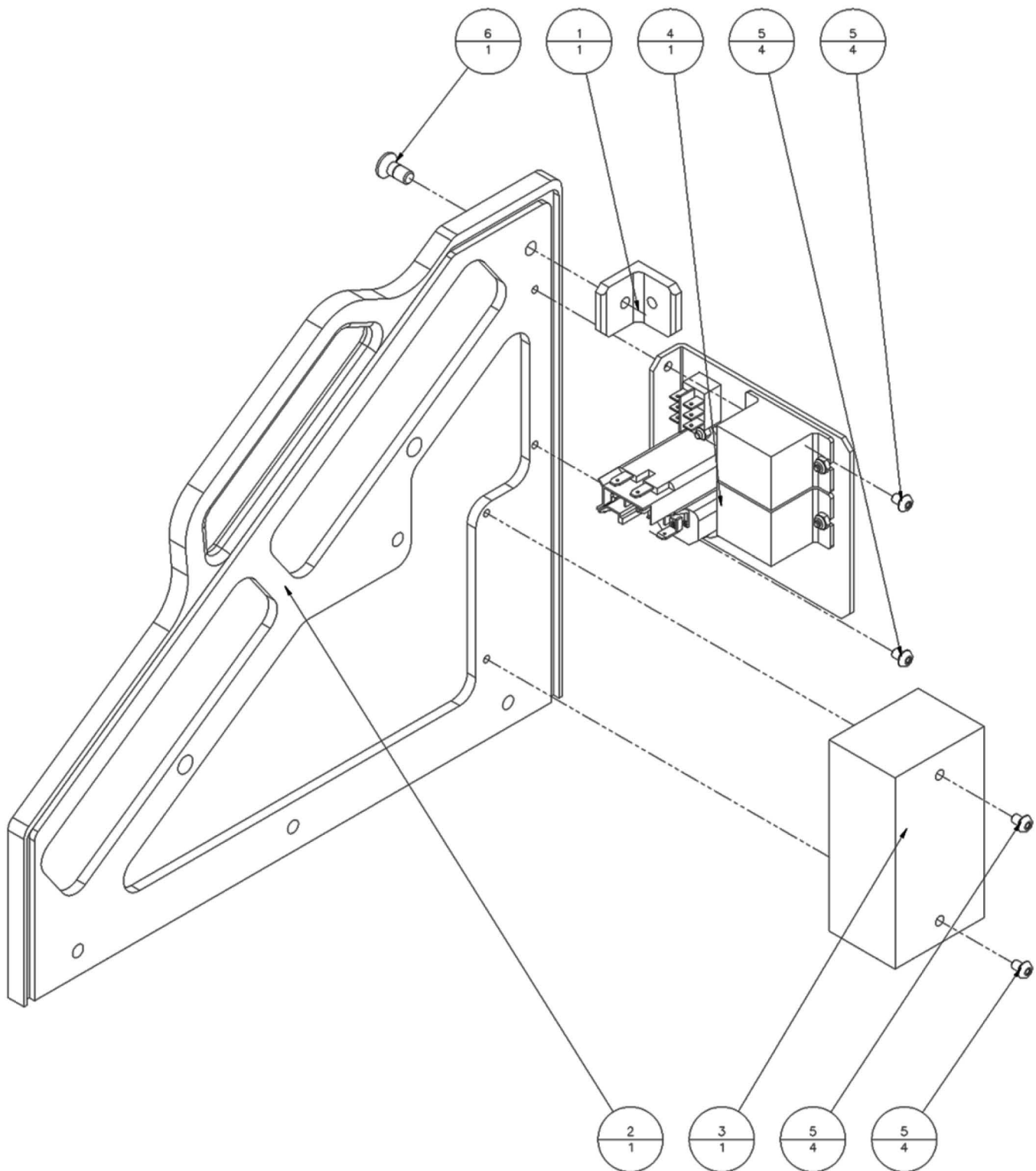
***T-101, Main Base Plate Assembly, Pro-Tester***

## T-102, Power Input Bracket Assembly, Pro-Tester



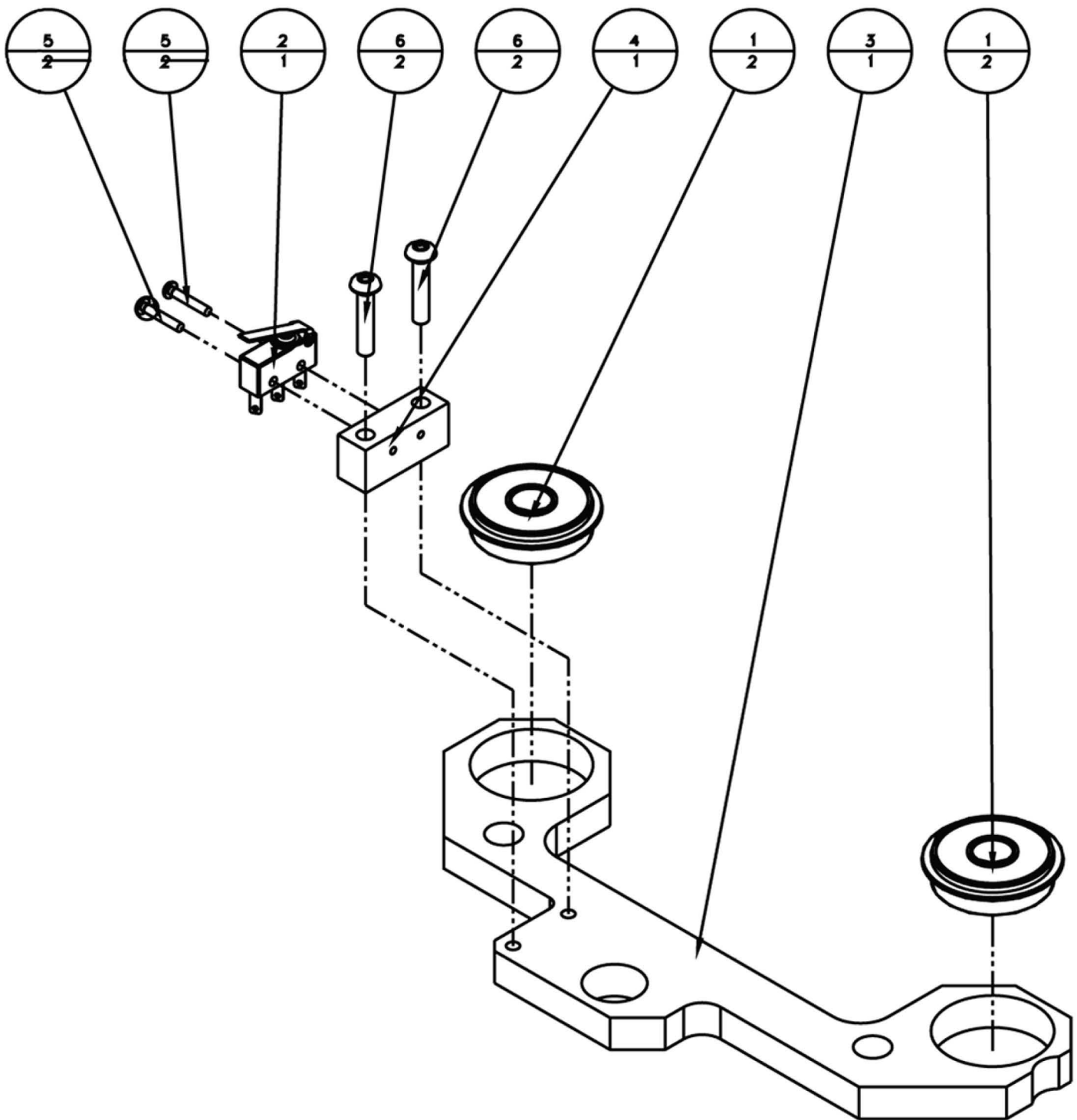
8	STOCK	SCREW, M3 X .5 X 10mm LONG, FLAT HEAD CAP, SS	2
7	STOCK	NUT, M3 X .5 HEX, NYLON INSERT LOCKING, ZINC PLATED STEEL	2
6	STOCK	NUT, 4-40 HEX, NYLON INSERT LOCKING, ZINC PLATED STEEL	4
5	T-099	RELAY, MAIN POWER SWITCH, 120VAC	2
4	T-092	POWER SWITCH, DPDT, 12A, MOM/OFF/MOM, ROCKER, BLACK	1
3	T-091	FUSE DRAWER, POWER ENTRY MODULE	1
2	T-090	POWER ENTRY MODULE, PANEL MOUNT	1
1	T-089	BRACKET, POWER INPUT MODULE	1
ITEM	PART NUMBER	DESCRIPTION	QTY
Parts List			

*T-102, Power Input Bracket Assembly, Pro-Tester*



6	STOCK	SCREW, M6 X 1 X 14mm LONG, FLAT HEAD CAP, SS	1
5	STOCK	SCREW, M4 X .7 X 6mm LONG, BOTTOM HEAD CAP, SS	4
4	T-102	POWER INPUT BRACKET ASSEMBLY	1
3	T-093	FILTER, MAIN AC POWER INPUT	1
2	T-074	PLATE, LEFT SIDE, END	1
1	T-071	ANGLE, MOUNTING, 1" X 1" X 1" LONG	1
ITEM	PART NUMBER	DESCRIPTION	QTY
<b>Parts List</b>			

*T-103, Left Side Plate Assembly, Pro-Tester*

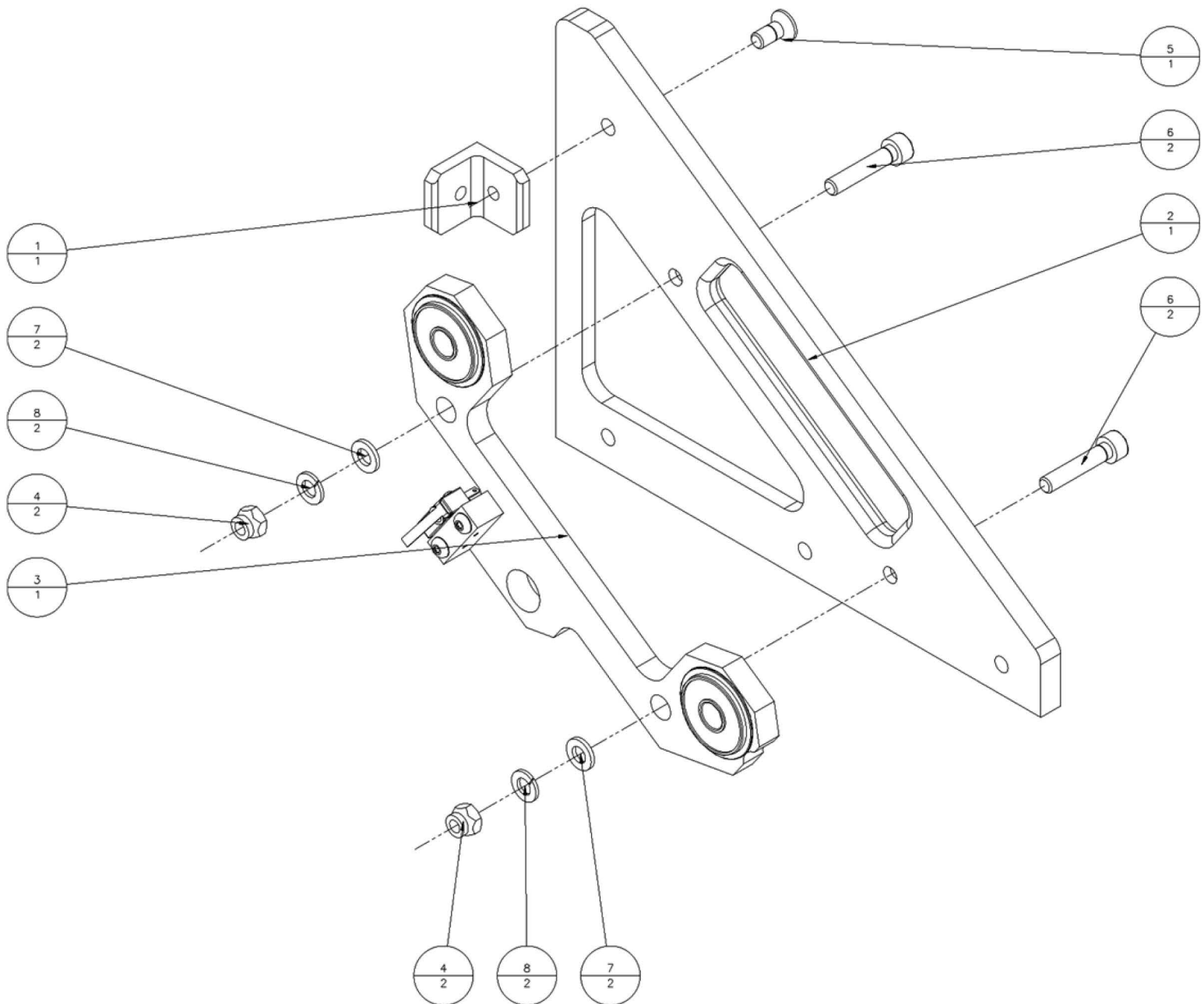




6	STOCK	SCREW, M4 X .7 X 20mm LONG, BOTTOM HEAD CAP, SS	2
5	STOCK	SCREW, 2-56 X 1/2" LONG, PHILLIPS PAN HEAD, SS	2
4	T-083	BRACKET, LIMIT SWITCH, EXTENDED	1
3	T-080	PLATE, BEARING SUPPORT, END	1
2	T-063	LIMIT SWITCH, SEALED, SPDT, 5A, .110 QC, LEVER	1
1	T-062	BEARING, 10mm ID X 30mm OD X 9mm W, SEALED, W/ SNAP RING	2
ITEM	PART NUMBER	DESCRIPTION	QTY
<b>Parts List</b>			

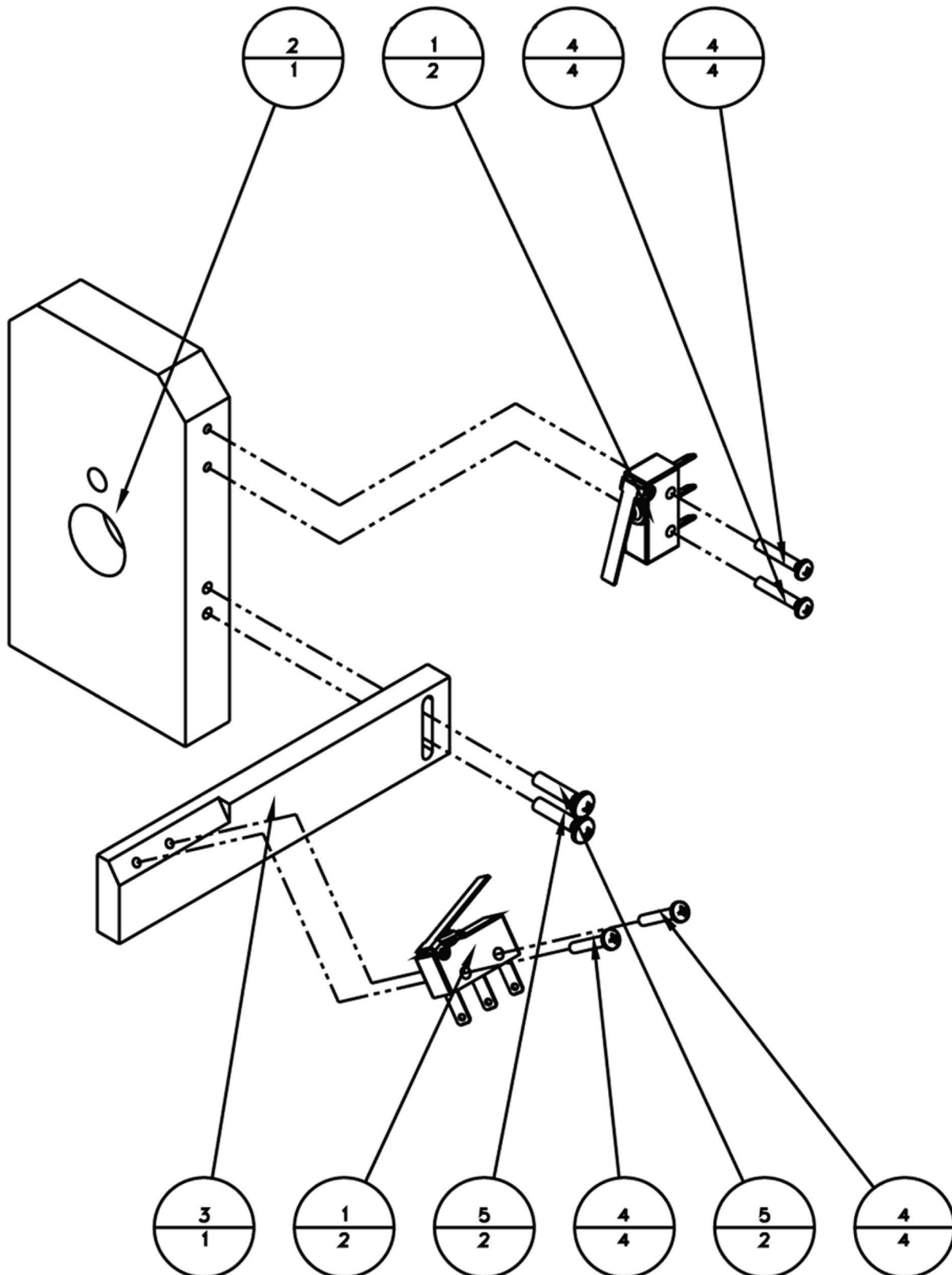
***T-104, Bearing Support Plate Assembly, Pro-Tester***

## T-105, Right Side Plate Assembly, Pro-Tester



8	STOCK	WASHER, M6 SPLIT LOCK, SS	2
7	STOCK	WASHER, M6 FLAT, DIN 125, SS	2
6	STOCK	SCREW, M6 X 1 X 25mm LONG, SOCKET HEAD CAP, SS	2
5	STOCK	SCREW, M6 X 1 X 14mm LONG, FLAT HEAD CAP, SS	1
4	STOCK	NUT, M6 X 1 HEX, NYLON INSERT LOCKING, ZINC PLATED STEEL	2
3	T-104	BEARING SUPPORT PLATE ASSEMBLY	1
2	T-075	PLATE, RIGHT SIDE, END	1
1	T-071	ANGLE, MOUNTING, 1" X 1" X 1" LONG	1
<b>ITEM</b>	<b>PART NUMBER</b>	<b>DESCRIPTION</b>	<b>QTY</b>
<b>Parts List</b>			

*T-105, Right Side Plate Assembly, Pro-Tester*





5	STOCK	SCREW, 4-40 X 1/2" LONG, PHILLIPS PAN HEAD, SS	2
4	STOCK	SCREW, 2-56 X 1/2" LONG, PHILLIPS PAN HEAD, SS	4
3	T-082	BRACKET, LIMIT SWITCH, NEAR HOME	1
2	T-081	SUPPORT, GUIDE SHAFT, END	1
1	T-063	LIMIT SWITCH, SEALED, SPDT, 5A, .110 QC, LEVER	2
ITEM	PART NUMBER	DESCRIPTION	QTY
Parts List			

*T-106, Guide Shaft Support Assembly, Pro-Tester*

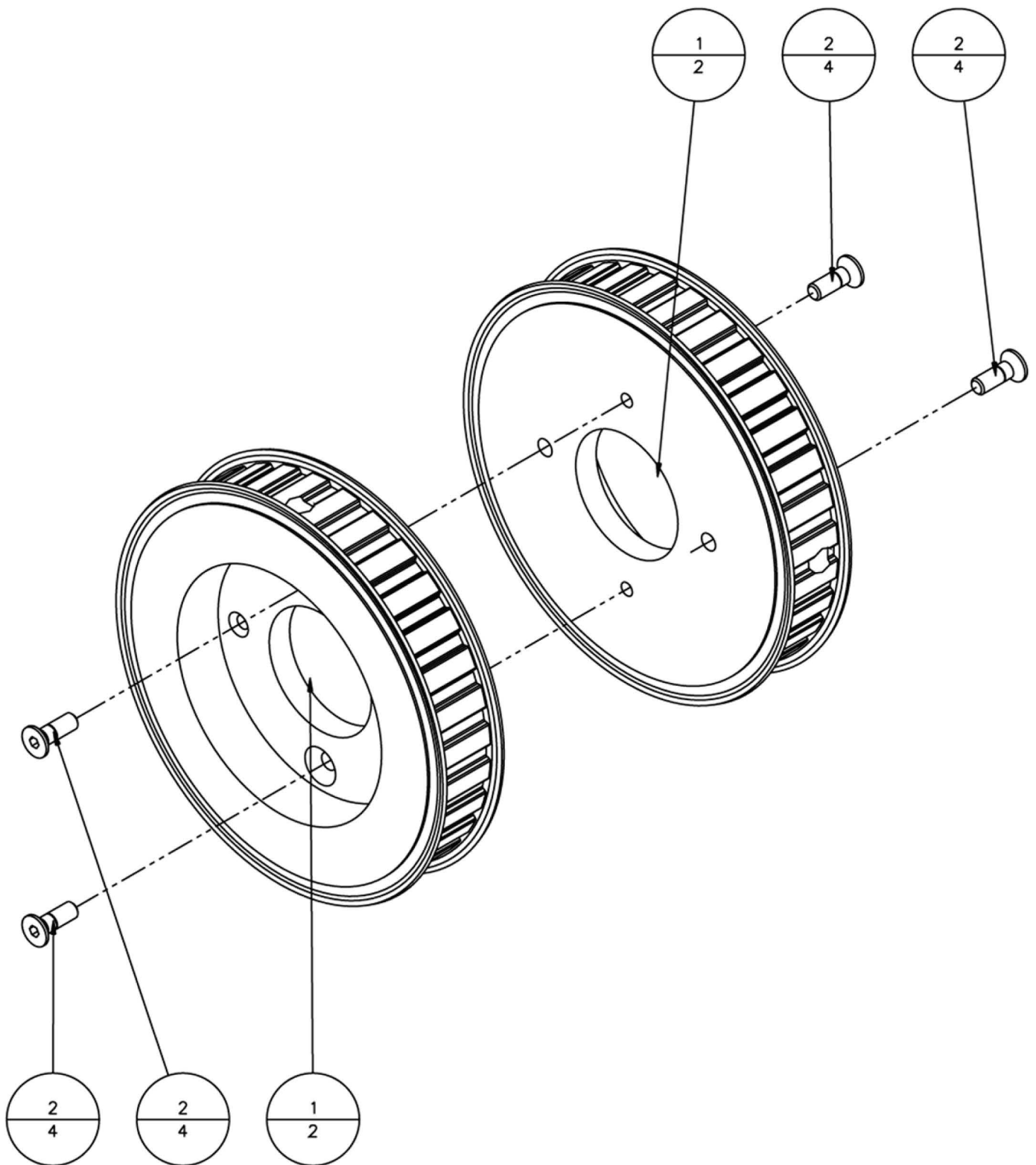




16	STOCK	WASHER, M5 SPLIT LOCK, SS	2
15	STOCK	WASHER, M5 FLAT, DIN 125, SS	2
14	STOCK	SCREW, M5 X .8 X 16mm LONG, SOCKET HEAD CAP, SS	4
13	STOCK	NUT, M8 X 1.25 HEX, JAM, SS	1
12	STOCK	NUT, 10-32 HEX, SMALL-PATTERN MACHINE, SS	2
11	STOCK	BUSHING, 5/8" ID X 7/8" OD X 5/8" LONG, SAE 841, BRONZE	2
10	STOCK	BOLT, M8 X 1.25 X 60mm LONG, HEX HEAD CAP, SS	1
9	STOCK	BOLT, 10-32 X 2-1/2" LONG, HEX HEAD MACHINE, SS	1
8	STOCK	BOLT, 10-32 X 1-1/4" LONG, HEX HEAD MACHINE, SS	1
7	T-084	POST, DRIVE, PLATE, DETENT	1
6	T-079	HOUSING, LINEAR BEARING, MOUNT	1
5	T-078	PLATE, CARRIAGE SLAVE, SHAFT	1
4	T-077	PLATE, CARRIAGE DRIVE, SCREW	1
3	T-067	BEARING, 5/8" ID LINEAR BALL, SELF-ALIGNING, CLOSED	2
2	T-064	PLUNGER, BALL, 3/8-16 X .625, SS, W/ LOCK	1
1	T-058	NUT, 5/8" X .20" LEAD, BRONZE, GRIP DRIVE	2
ITEM	PART NUMBER	DESCRIPTION	QTY
<b>Parts List</b>			

***T-107, Shaft Carriage Plate Assembly, Pro-Tester***

T-108, Main Drive Pulley Assembly, Pro-Tester

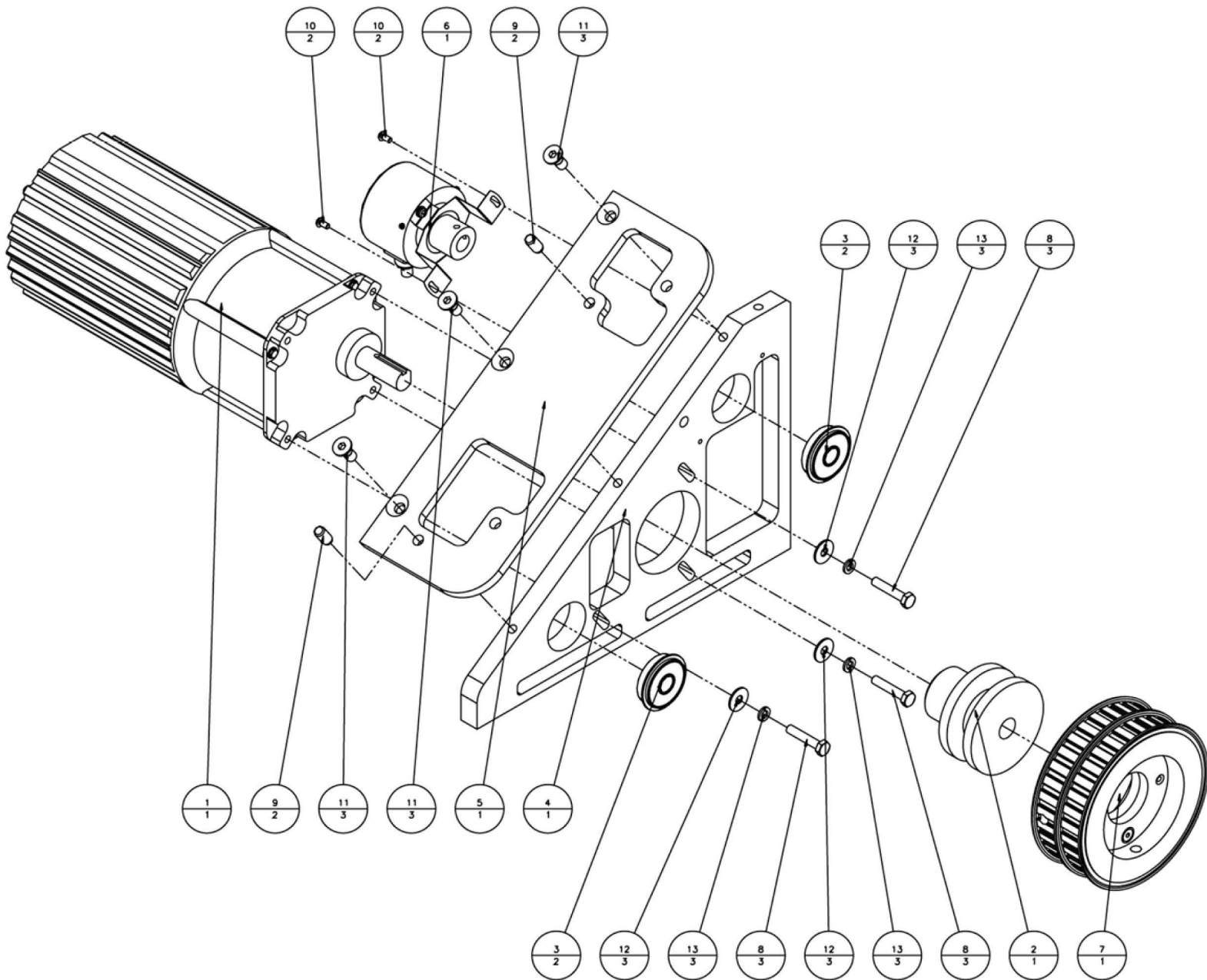




2	STOCK	SCREW, M4 X .7 X 12mm LONG, FLAT HEAD CAP, SS	4
1	T-060	PULLEY, 32 TOOTH X 3/8" PITCH, ALUMINUM W/ FLANGES	2
<b>ITEM</b>	<b>PART NUMBER</b>	<b>DESCRIPTION</b>	<b>QTY</b>
<b>Parts List</b>			

***T-108, Main Drive Pulley Assembly, Pro-Tester***

# T-109, Motor Support Plate Assembly, Pro-Tester



13	STOCK	WASHER, /10 SPLIT-LOCK, SS	3
12	STOCK	WASHER, /10 TYPE B, REGULAR PATTERN, SS	3
11	STOCK	SCREW, M6 X 1 X 14mm LONG, FLAT HEAD CAP, SS	3
10	STOCK	SCREW, M3 X .5 X 6mm LONG, BOTTOM HEAD CAP, SS	2
9	STOCK	DOWEL PIN, 1/4" X 1/2" LONG, HARDENED, SS	2
8	STOCK	BOLT, 10-32 X 1-1/4" LONG, HEX HEAD MACHINE, SS	3
7	T-108	MAIN DRIVE PULLEY ASSY	1
6	T-095	ROTARY ENCODER, 100 PPR, 10mm BORE	1
5	T-085	SUPPORT, SAMPLE GRIP ASSY	1
4	T-076	PLATE, MOTOR SUPPORT, STANDOFF	1
3	T-062	BEARING, 10mm ID X 30mm OD X 9mm W, SEALED, W/ SNAP RING	2
2	T-061	TORQUE LIMITER, 1/2" BORE X 1-1/4" SHEEVE X 1/2" GRIP	1
1	T-055	MOTOR, 1/6 HP, VARIABLE SPEED, 60:1 GEAR RATIO, 230VAC	1
ITEM	PART NUMBER	DESCRIPTION	QTY
Parts List			

***T-109, Motor Support Plate Assembly, Pro-Tester***

# Warranty

DEMTECH Services, Inc. warrants all equipment of its manufacture to be free from defects in materials, workmanship, mechanical parts, and labor for a period of one year from the date of shipment to the original buyer and ninety days for electrical. This warranty excludes normal wear items such as gears, bearings and chains. The liability under this warranty is limited to replacement parts and labor on equipment when the equipment is returned prepaid to the factory or its authorized service center with prior authorization from DEMTECH Services, Inc., and upon examination by DEMTECH Services, Inc., is determined to be defective. At DEMTECH Services, Inc.'s option, a service representative may be dispatched to the equipment location.

As an additional protection, DEMTECH Services, Inc. warrants that for a period of 90 days from the date of shipment to the original buyer, pending prior authorization from DEMTECH Services, Inc., there will be no charge for service related shipping of parts and/or equipment or for authorized travel of a service representative to the equipment location. After 90 days, all costs incurred for shipping the equipment or parts thereof or for travel are the responsibility of the buyer. Our warranty for this equipment is rendered void if the unit has been repaired, taken apart or modified, or attempted to be, unless such actions have been taken in accordance with written instructions received from DEMTECH Services, Inc. The warranty is also void if the equipment has been subjected to abuse, accident or other abnormal conditions.

## IF ANY FAULT DEVELOPS, THE FOLLOWING STEPS SHOULD BE TAKEN:

1. Notify DEMTECH Services, Inc. by calling 1-888-324-9353. Overseas customers should contact the local DEMTECH authorized service center. Please be prepared with the model number, serial number and full details of the difficulty. Upon receipt of this information, service data or shipping instructions will be provided by DEMTECH Services, Inc. Do not return the unit for repair without first contacting the factory or its representative for instructions.
2. After the initial 90 day period, on receipt of shipping instructions, forward the equipment prepaid to the factory or its authorized service center as instructed. If requested, an estimate of the charges will be made before work begins, especially with those cases where the DEMTECH Services, Inc. product is not covered by the warranty.
3. If the original carton and packing are not available, the product should be packed in a container with a strong exterior and surrounded by a protective layer of shock-absorbing material. DEMTECH Services, Inc. advises returning the equipment at full value to the carrier.

DEMTECH Services, Inc. reserves the right to make changes in design at any time without incurring any obligation to install the same changes on units previously purchased.

This warranty states the essence of the obligations or liabilities on the part of DEMTECH Services, Inc. THE FORMAL, COMPLETE AND EXCLUSIVE STATEMENT OF DEMTECH SERVICES, INC.'S WARRANTY IS CONTAINED IN ITS QUOTATIONS, ACKNOWLEDGEMENTS AND INVOICES. DEMTECH Services, Inc. neither assumes, nor authorizes any person to assume for it, any liability in connection with the sale of its equipment other than those set forth herein.